



WESTSHORE CORPORATE CENTER

600 N. Westshore Blvd, Tampa, Florida 33609

LOCATION & OVERVIEW

Professional 12-story office building offers easy access to major labor markets.

Prime Westshore location at the intersection of I-275 and Westshore Blvd with convenient access to I-275 and Veteran's Expressway. 5 minutes from Tampa International Airport; 10 minutes from downtown Tampa.

NANCY HERZ
Managing Director
Commercial Florida
Direct 813-501-7580
NHerz@CommercialFlorida.net

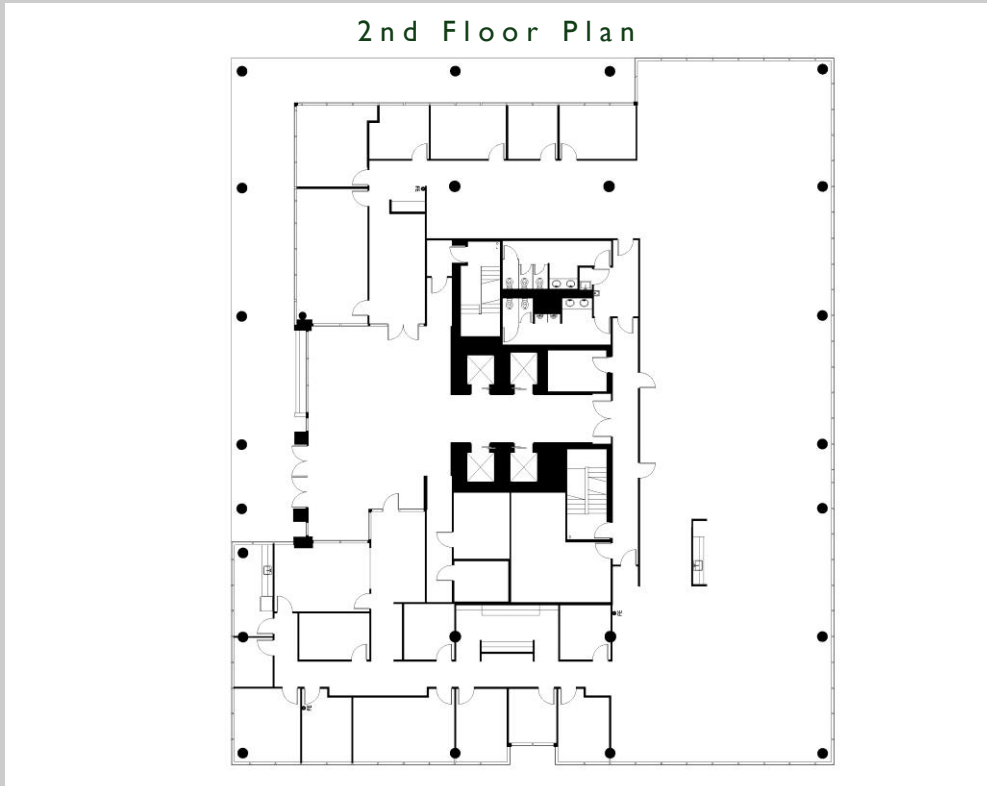
FEATURES & AMENITIES

- Location offers easy access to major labor markets
- Outdoor covered terrace with new furnishings
- 5 parking spaces per 1,000 RSF located in convenient adjacent parking garage with a covered walkway to the building
- Adjacent full-service hotel; convenient to restaurants

**COMMERCIAL
FLORIDA** 

OFFICE BUILDING FOR LEASE

173,546 RSF 12-stories



WESTSHORE CORPORATE CENTER

600 N. Westshore Blvd, Tampa, Florida 33609

PARKING

5 Spaces/1,000 SF

COMMENTS

Prime Westshore location at the intersection of I-275 and N. Westshore Blvd offers easy access to I-275 and Veteran's Expressway. Five minutes from Tampa International Airport; ten minutes from downtown Tampa and close to numerous banks, hotels, restaurants and major retail centers. Adjacent full-service hotel for overnight guests and access to restaurant and meeting rooms. Walk to Westshore Plaza to numerous restaurants & shopping.



NANCY HERZ

Managing Director

Commercial Florida

Management Services, LLC

Direct 813-501-7580

**COMMERCIAL
FLORIDA** 