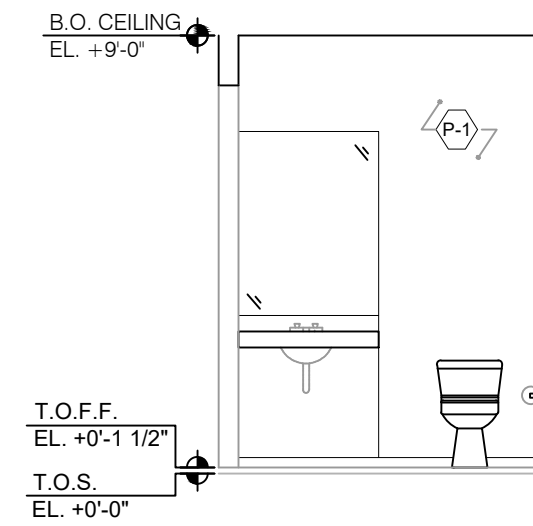
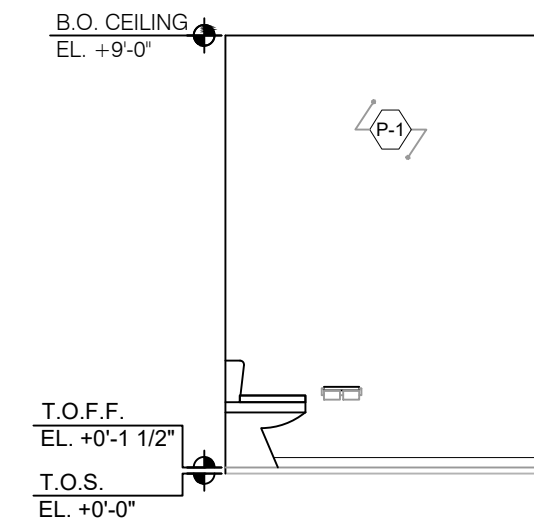


**8 SOUTH BATHROOM ELE**  
SCALE: 1/4"=1'-0"



**7 WEST BATHROOM ELE**  
SCALE: 1/4"=1'-0"

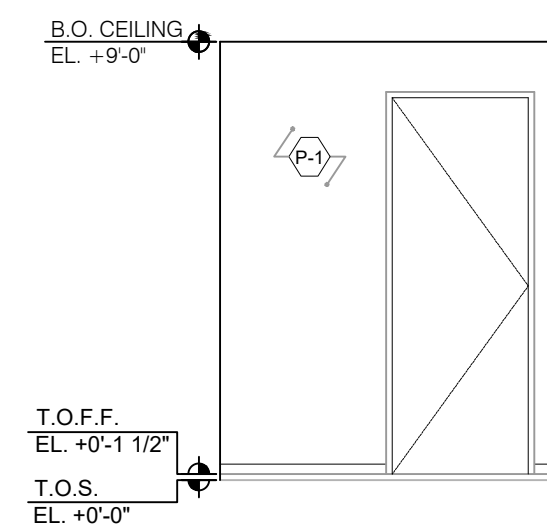


**6 NORTH BATHROOM ELE**  
SCALE: 1/4"=1'-0"

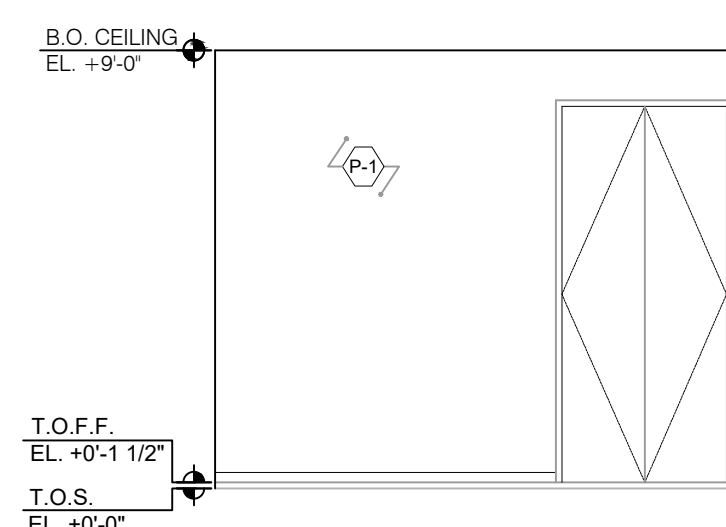
**GENERAL PARTITION NOTES:**

- GENERAL CONTRACTOR SHALL BE SOLELY RESPONSIBLE FOR THE APPROPRIATE CONSTRUCTION OF ALL PARTITION TYPES & WITH THE COORDINATION OF ALL MECHANICAL, ELECTRICAL, AND PLUMBING SYSTEMS THE CONTRACTOR SHALL GIVE SPECIAL CONSIDERATION TO EXAMINATION OF ANY EXISTING CONDITIONS THAT MAY PREVENT THE CONSTRUCTION OF SUCH RATED PARTITIONS DETAILS. PLANS VARIATION OF TYPICAL RATED PARTITION DETAILS SHALL BE ANTICIPATED AND SHALL BE EXPRESSLY INCLUDED AS PART OF THE WORK WHENEVER REQUIRED. AT NO ADDITIONAL COST TO THE OWNER, THE CONTRACTOR SHALL PROVIDE VARIATIONS TO DETAILS OF PARTITIONS REQUIRED. IGNORANCE ON THE PART OF THE CONTRACTOR SHALL IN NO WAY RELIEVE HIM OF THIS OBLIGATIONS AND RESPONSIBILITIES ASSUMED UNDER THIS CONTRACT.
- GEN. CONTRA. SHALL IDENTIFY ALL SMOKE WALLS / FIRE WALLS ABOVE THE CEILING WITH RED PAINT TO READ ACCORDING TO THE WALL RATING AS SUCH: LETTERS MUST BE 1 1/2" FOR ONE HOUR WALLS AND 3" FOR TWO HOUR AND SMOKE WALLS AS FOLLOWS:  

TWO HOUR FIRE/SMOKE WALL	(PROTECT ALL PENETRATIONS)
TWO HOUR FIRE WALL	(PROTECT ALL PENETRATIONS)
ONE HOUR FIRE/SMOKE WALL	(PROTECT ALL PENETRATIONS)
ONE HOUR FIRE WALL	(PROTECT ALL PENETRATIONS)
SMOKE TIGHT WALL	(PROTECT ALL PENETRATIONS)
- PROVIDE 2 X 4 PRESSURE TREATED FIRE-RETARDANT PAINTED WOOD BLOCKING (NAILER) AT ALL LOCATIONS SCHEDULED TO RECEIVE WOOD BASES (SEE FINISH SCHEDULES).
- ALL PARTITIONS SHALL BE 4" NOMINAL DIMENSION (UNLESS OTHERWISE NOTED ON PLANS).
- SUPPORT A MINIMUM OF (5) POUNDS PER SQUARE FOOT APPLIED PERPENDICULAR TO THE WALL. PROVIDE BACKING SUPPORT AT ALL PARTITIONS WHERE EQUIPMENT OR CASEWORK IS INDICATED TO BE MOUNTED ON THE WALL.
- CONTRACTOR SHALL VERIFY ALL CONDITIONS AND CONSTRUCTION OF ALL EXISTING PARTITIONS (DESIGNATED AS NEW PARTITION TYPES) FOR UP-GRADING IN LIEU OF NEW, AS REQUIRED TO CONFORM w/ NOTED WALL TYPES.
- ALL DIMENSIONS SHOWN ON FLOOR PLANS ARE ROUGH TO ROUGH (STUD TO STUD OR MASONRY TO MASONRY OR MASONRY TO STUD) TYPICAL U.O.C.
- ALL EXISTING MASONRY WALLS OR CONCRETE COLUMNS IN AREAS AFFECTED BY NEW RENOVATIONS ALL EXISTING MASONRY WALLS OR CONCRETE COLUMNS IN AREAS AFFECTED BY NEW RENOVATIONS SHALL RECEIVE SCHEDULED FINISH ON 5/8" TYPE 'X' GYPSUM WALLBOARD ON 7/8" METAL FURRING STRIPS AT 16" O.C. (TYPICAL UNLESS OTHERWISE NOTED ON PLANS).

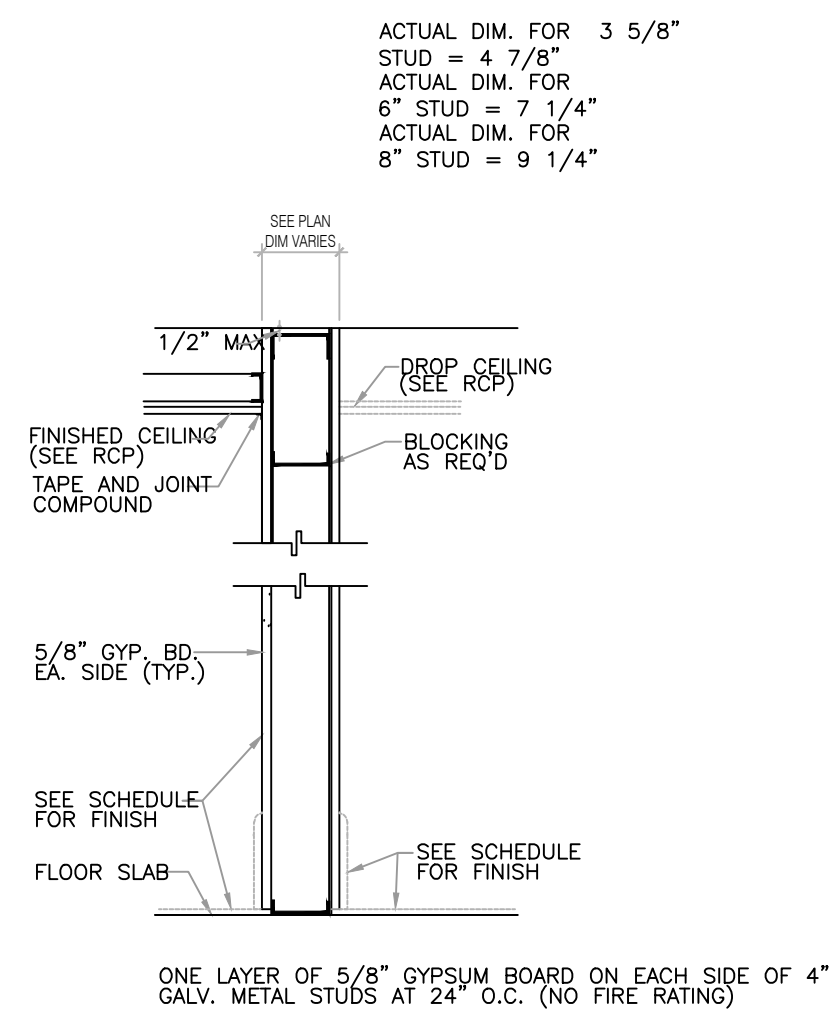


**5 SOUTH ELEVATION**  
SCALE: 1/4"=1'-0"



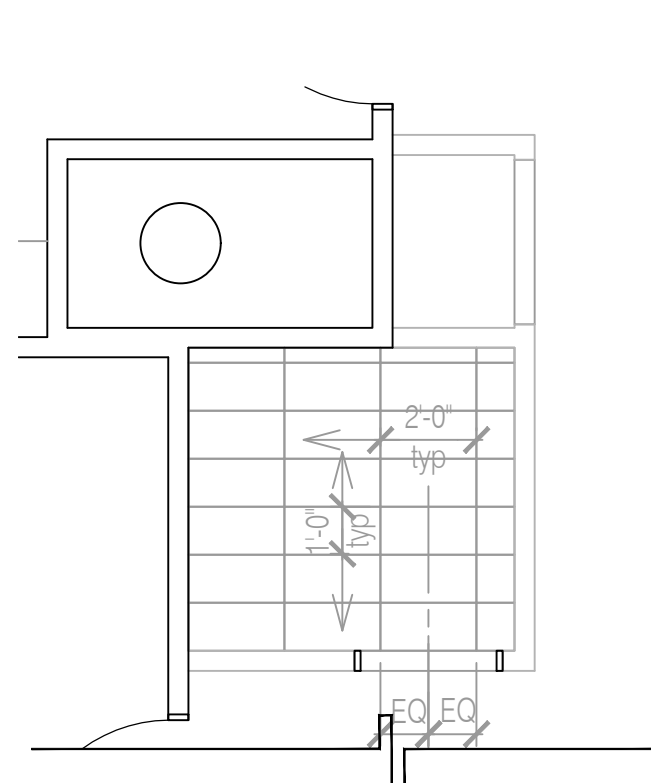
**4 EAST ELEVATION**  
SCALE: 1/4"=1'-0"

FINISH SCHEDULE		
P-1	TYPICAL PAINT	SHERWIN WILLIAMS -
P-2	ACCENT PAINT	SHERWIN WILLIAMS -

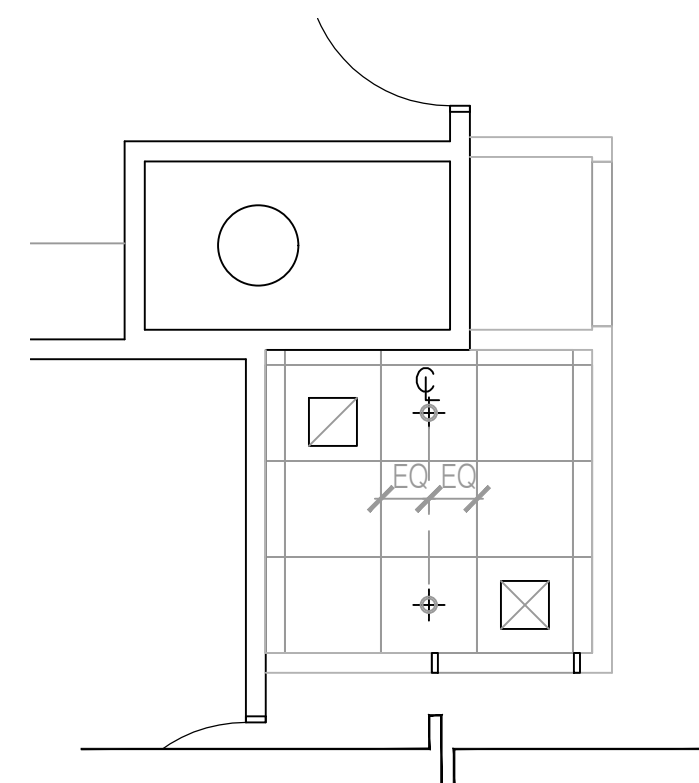


- 1 TYPICAL NON-RATED PARTITION
- 1S TYPICAL NON-RATED PARTITION w/ SOUND ATTENUATION

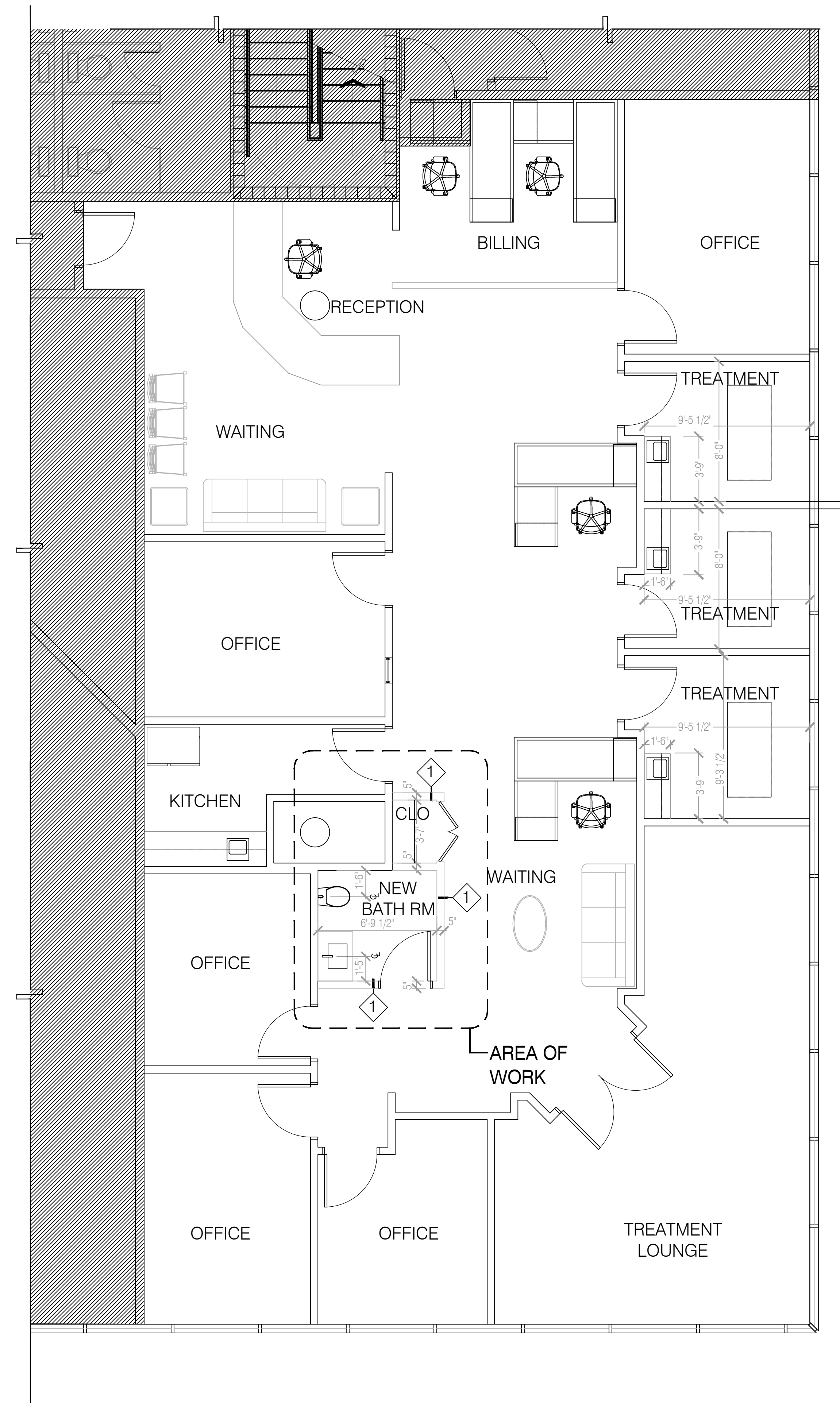
**WALL TYPE 1 - TYPICAL PARTITION**  
SCALE: 1"=1'-0"



**3 NEW PAVING PLAN**  
SCALE: 1/4"=1'-0"



**2 NEW REFLECTED CEILING PLAN**  
SCALE: 1/4"=1'-0"



**1 NEW BATHROOM ADDITION**  
SCALE: 1/4"=1'-0"

THIS INFORMATION IS FOR USE ON THE SPECIFIC PROJECT ONLY. REUSE OF THE DATA ON THESE SPECIFICS/ OWNERSHIP WILL BE AT THE RISK OF THE USER AND WITHOUT LIABILITY OR LEGAL EXPOSURE TO RKB ARCHITECTS PLANNERS, INC. OR ANY OF ITS ASSOCIATES OR PROFESSIONAL INDIVIDUALS. BY USING THIS DATA THE USER SHALL INDEMNIFY AND HOLD HARMLESS RKB ARCHITECTS PLANNERS, INC. AND RKB ARCHITECTS PLANNERS, INC.'S INDEPENDENT CONSULTANTS OR PROFESSIONAL ASSOCIATES FROM ALL CLAIMS, DAMAGES, LOSSES AND EXPENSES AND INCLUDING ATTORNEY'S FEES ARISING OUT OF OR RESULTING FROM THE INFORMATION.

ARCHITECT RESERVES HIS COMMON LAW COPYRIGHT. THE DESIGN DRAWINGS ARE NOT TO BE REPRODUCED OR CHANGED WITHOUT WRITTEN PERMISSION. DRAWINGS MAY NOT BE ASSIGNED WITHOUT WRITTEN PERMISSION FROM THE ARCHITECT.