



## CYPRESS CENTER III *5405 Cypress Center Drive, Tampa, Florida*

### LOCATION & OVERVIEW

3-story office building located in Westshore. The property features a garden area plaza with water fountains and an atrium lobby. After-hours card key access.

Centrally located with convenient access to I-275 and Veteran's Expressway

Five minutes from Tampa International Airport; 10 minutes from downtown Tampa

Close proximity to numerous banks, hotels, restaurants and retail centers

### FEATURES & AMENITIES

- Three-story office building located in a garden area plaza
- Includes water fountains and an atrium lobby with seating
- Popular on-site deli
- Surface and covered parking available
- Tropical setting with a creek at the entrance

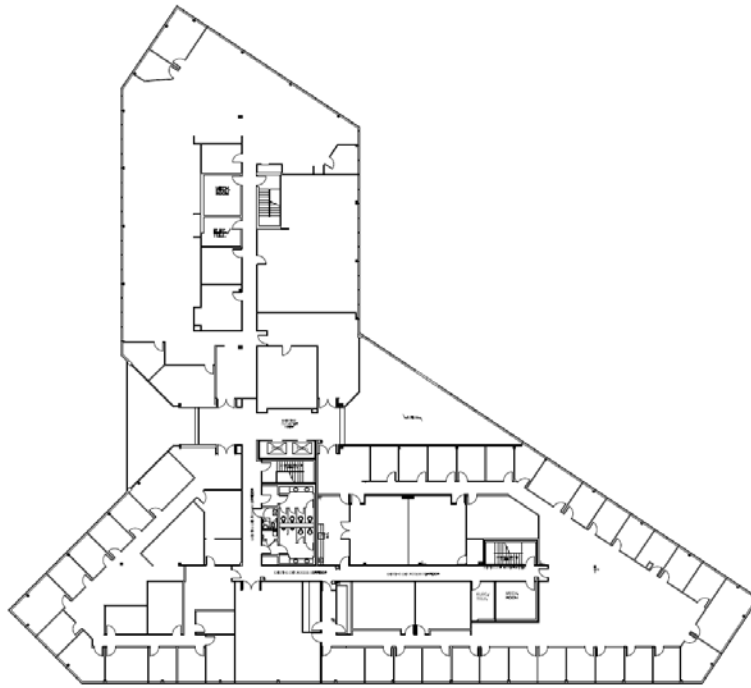
**NANCY HERZ**  
Managing Director  
**Commercial Florida**  
Management Services, LLC  
Direct 813-501-7580



# OFFICE BUILDING FOR LEASE

82,871 RSF 3-story building

## TYPICAL FLOOR PLAN



**CYPRESS CENTER III** 5405 Cypress Center Drive, Tampa, Florida

### PARKING

4 spaces per 1,000 SF

Surface and covered parking with ample spaces for visitors

### LOCATION

Centrally located with convenient access to I-275 and Veteran's Expressway. Five minutes from Tampa International Airport; 10 minutes from downtown Tampa with close proximity to numerous banks, hotels, restaurants and retail centers



**NANCY HERZ**  
Managing Director  
**Commercial Florida**  
Management Services, LLC  
Direct 813-501-7580

**COMMERCIAL  
FLORIDA** **CF**  
MANAGEMENT SERVICES, LLC